

NOTES:

1. ASSEMBLIES SHALL BE PROTECTED WITH A MINIMUM OF THREE (3) POST BARRICADES PER PC/DOT STANDARD DETAIL 106, TYPE B. MDWID WILL DETERMINE LOCATION OF POST BARRICADES BASED ON EXISTING CONDITIONS.
2. ITEMS INDICATED MAY BE SUBSTITUTED BY AN APPROVED EQUAL.
3. IF ANY VARIANCE TO THE ENCLOSURE IS TO BE MADE, THE CONTRACTOR SHALL SUBMIT SHOP DRAWINGS FOR THE COMBINATION AIR/VACUUM RELEASE VALVE ENCLOSURE PRIOR TO CONSTRUCTION.
4. BENDS MAY VARY TO LOCATE ARV OUTSIDE TRAVELED WAY. MAINTAIN POSITIVE SLOPE FOR DRAINAGE.
5. RESTRAIN ALL JOINTS 3" AND LARGER.



**COMBINATION AIR/VACUUM
RELEASE VALVE NOTES**

ISSUED: 01/99
REVISED: 07/2014

SCALE: N.T.S.

PAGE 1
OF
3

S.D.# MW-330

GUARDSHACK GS-M1 TYPE: HINGED/GATE
WOODLAND TAN COLOR
(OR APPROVED EQUAL)

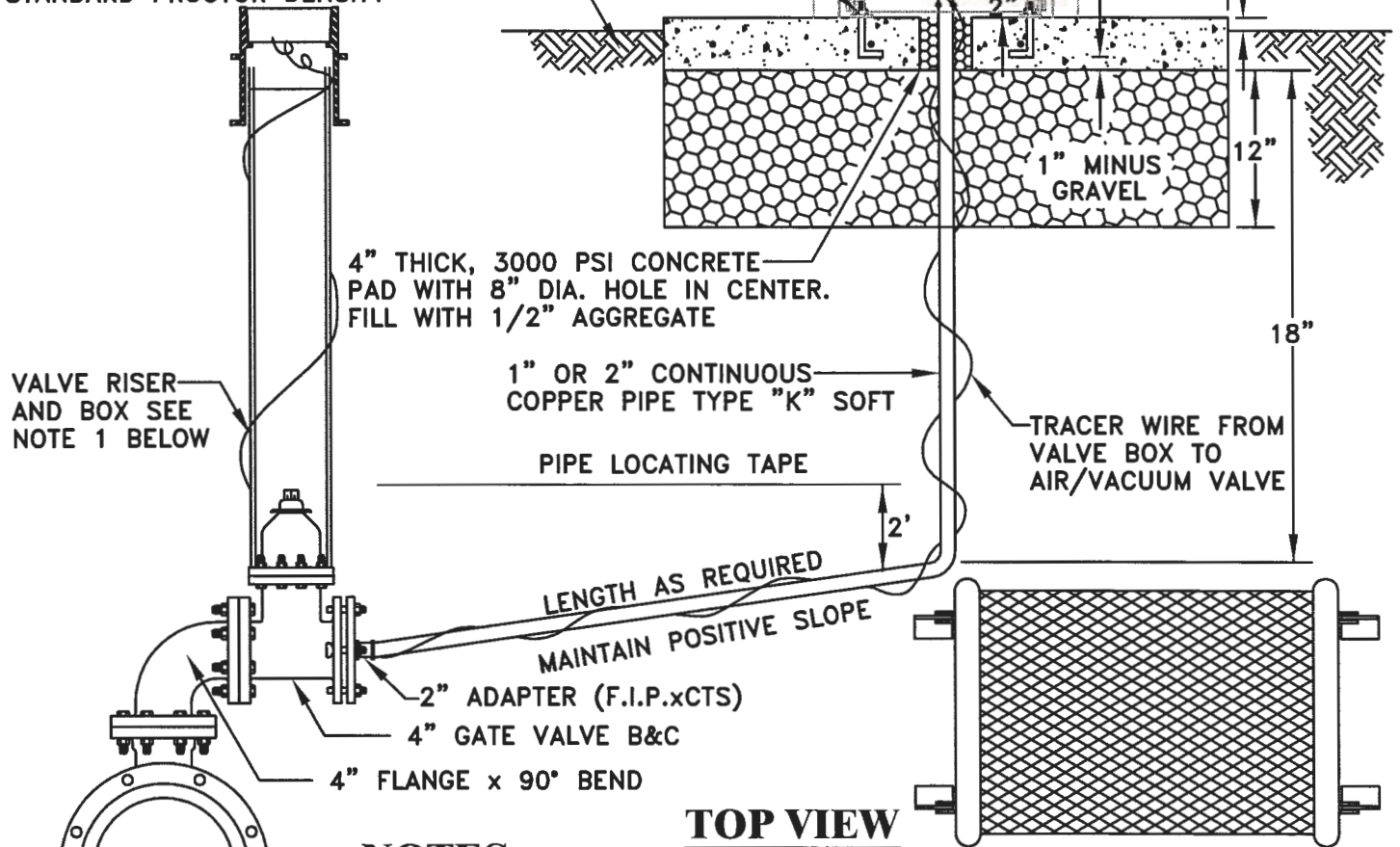
GALVANIZED RETURN BEND WITH CLOSE NIPPLE,
S.S. SCREEN (TYPE 304) OVER END. CLAMP IN PLACE

COMBINATION AIR/VACUUM RELEASE VALVE ASSEMBLY
SIZE AND MODEL PER PLANS

1" OR 2" BRASS NIPPLE
1/2" DIA. x 4" LONG ANCHOR BOLTS

(4) #3 BARS EACH WAY
REINFORCING NOT REQUIRED
IF PAD IS POURED IN PLACE

COMPACTED BACKFILL (MIN. 95%)
STANDARD PROCTOR DENSITY



VALVE RISER
AND BOX SEE
NOTE 1 BELOW

4" THICK, 3000 PSI CONCRETE
PAD WITH 8" DIA. HOLE IN CENTER.
FILL WITH 1/2" AGGREGATE

1" OR 2" CONTINUOUS
COPPER PIPE TYPE "K" SOFT

PIPE LOCATING TAPE

TRACER WIRE FROM
VALVE BOX TO
AIR/VACUUM VALVE

LENGTH AS REQUIRED
MAINTAIN POSITIVE SLOPE

2" ADAPTER (F.I.P. x CTS)
4" GATE VALVE B&C
4" FLANGE x 90° BEND

TOP VIEW

NOTES:

1. VALVE NUT EXTENSION REQUIRED WHERE DEPTH TO TOP OF NUT IS FIVE FEET (5') OR GREATER, SEE MDWID STANDARD DETAIL MW-305 AND TUCSON WATER SD-305, SHEET 2.
2. FOR 1" ARV INSTALLATION - INSTALL 1" SERVICE SADDLE AND 1" CORP. STOP (CCxMIP).

MJ x FLANGE TEE

NOTE: THIS DETAIL REPLACES TUCSON WATER STANDARD DETAIL SD-331.



**1" & 2" COMBINATION AIR/VACUUM
RELEASE VALVE**

ISSUED: 01/99
REVISED: 07/2014

SCALE: N.T.S.

PAGE 2
OF 3

S.D.# **MW-330**

GUARDSHACK GS-M2 TYPE: HINGED/GATE
WOODLAND TAN COLOR
(OR APPROVED EQUAL)

GALVANIZED RETURN BEND WITH CLOSE NIPPLE,

COMBINATION AIR/VACUUM RELEASE VALVE ASSEMBLY
SIZE AND MODEL PER PLANS

1/2" DIA. x 4" LONG ANCHOR BOLTS

COMPACTED BACKFILL (MIN. 95%)
STANDARD PROCTOR DENSITY

(4) #3 BARS EACH WAY
REINFORCING NOT REQUIRED
IF PAD IS POURED IN PLACE

4" THICK, 3000 PSI CONCRETE
PAD WITH 8" DIA. HOLE IN CENTER.
FILL WITH 1/2" AGGREGATE

VALVE RISER
AND BOX SEE
NOTE 1 BELOW

LENGTH
AS
REQUIRED

4" DIP FL x PLAIN
END PIPE

4" x 45° MJ BEND

4" GATE VALVE B&C

4" FLANGE x 90° BEND

MJ x FLANGE TEE

NOTES:

1. VALVE NUT EXTENSION REQUIRED WHERE DEPTH TO TOP OF NUT IS FIVE FEET (5') OR GREATER, SEE MDWID STANDARD DETAIL MW-305 AND TUCSON WATER SD-305, SHEET 2.
2. RESTRAIN ALL JOINTS.
3. ALL DIP, INCLUDING VALVES AND FITTINGS, SHALL BE ENCASED IN POLYETHYLENE IN ACCORDANCE WITH AWWA C105, METHOD A.

TOP VIEW



**3" & LARGER COMBINATION
AIR/VACUUM RELEASE VALVE**

ISSUED: 01/99
REVISED: 07/2014

SCALE: N.T.S.

PAGE 3
OF 3

S.D.# **MW-330**