

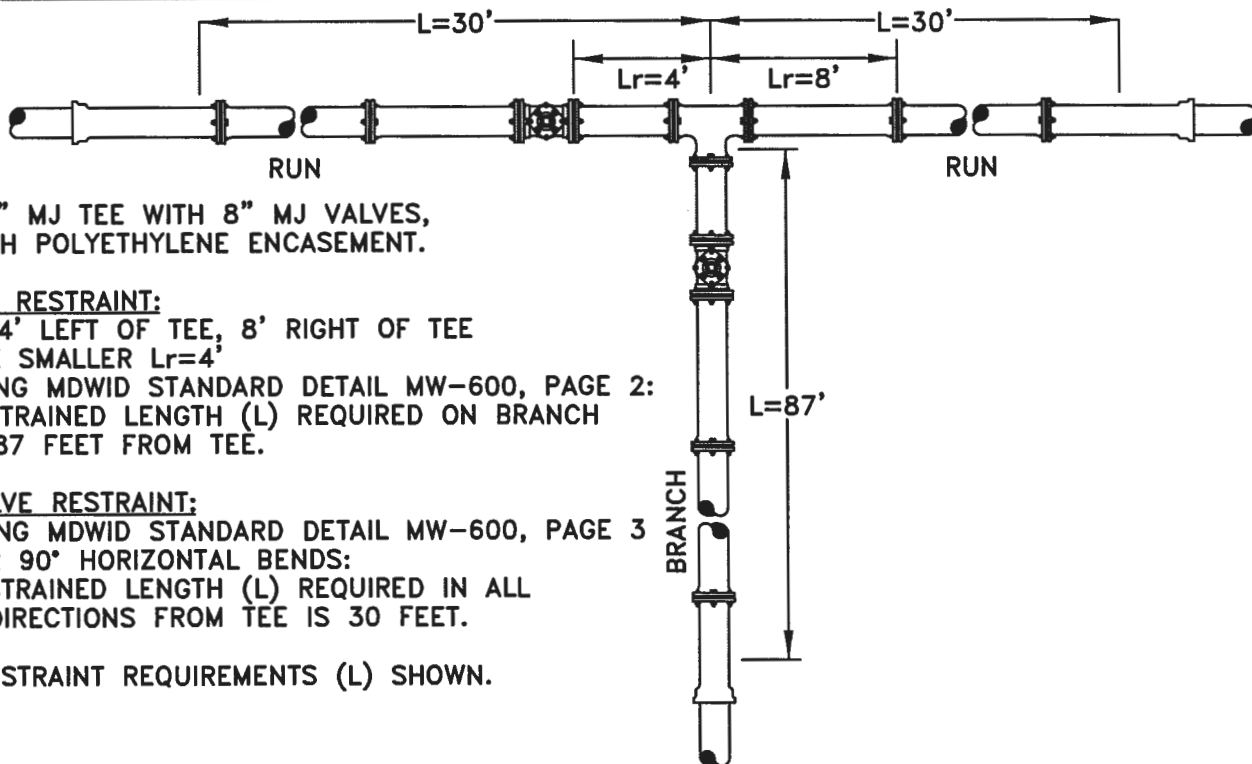
8" x 8" FLANGED TEE WITH 8" FL x MJ VALVES,
DIP WITH POLYETHYLENE ENCASEMENT.

A.) TEE RESTRAINT:
 $L_r=18'$ LEFT OF TEE, $8'$ RIGHT OF TEE
 USE SMALLER $L_r=8'$
 USING MDWID STANDARD DETAIL MW-600, PAGE 2:
 RESTRAINED LENGTH (L) REQUIRED ON BRANCH
 IS 50 FEET FROM TEE.

B.) VALVE RESTRAINT:
 USING MDWID STANDARD DETAIL MW-600, PAGE 3
 FOR 90° HORIZONTAL BENDS:
 RESTRAINED LENGTH (L) REQUIRED IN ALL
 3 DIRECTIONS FROM TEE IS 30 FEET.

USE RESTRAINT REQUIREMENTS (L) SHOWN.

FLANGED TEE WITH VALVES ON BRANCH AND RUN



8" x 8" MJ TEE WITH 8" MJ VALVES,
DIP WITH POLYETHYLENE ENCASEMENT.

A.) TEE RESTRAINT:
 $L_r=4'$ LEFT OF TEE, $8'$ RIGHT OF TEE
 USE SMALLER $L_r=4'$
 USING MDWID STANDARD DETAIL MW-600, PAGE 2:
 RESTRAINED LENGTH (L) REQUIRED ON BRANCH
 IS 87 FEET FROM TEE.

B.) VALVE RESTRAINT:
 USING MDWID STANDARD DETAIL MW-600, PAGE 3
 FOR 90° HORIZONTAL BENDS:
 RESTRAINED LENGTH (L) REQUIRED IN ALL
 3 DIRECTIONS FROM TEE IS 30 FEET.

USE RESTRAINT REQUIREMENTS (L) SHOWN.

MECHANICAL JOINT TEE WITH VALVES ON BRANCH AND RUN



RESTRAINED JOINT EXAMPLES

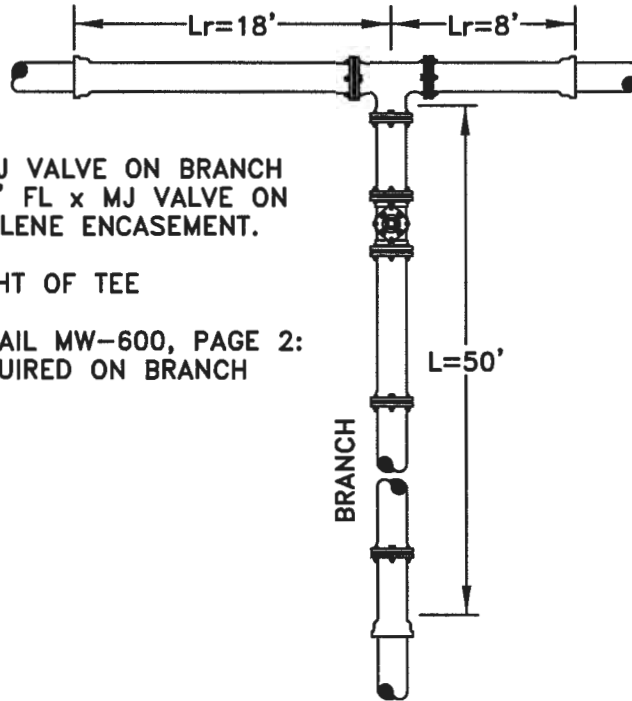
ISSUED: 01/99
 REVISED: 06/2004

SCALE: N.T.S.

PAGE 1
 OF 3

S.D.#

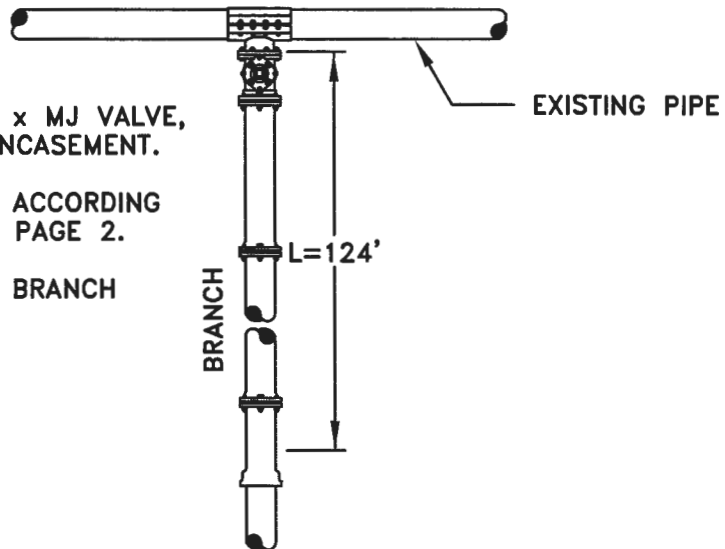
MW-600A



8" x 8" MJ TEE WITH 8" MJ VALVE ON BRANCH
OR 8" x 8" FL TEE WITH 8" FL x MJ VALVE ON
BRANCH, DIP WITH POLYETHYLENE ENCASEMENT.

Lr=18' LEFT OF TEE, 8' RIGHT OF TEE
USE SMALLER Lr=8'
USING MDWID STANDARD DETAIL MW-600, PAGE 2:
RESTRAINED LENGTH (L) REQUIRED ON BRANCH
IS 50 FEET FROM TEE.

TEE WITH VALVE ON BRANCH ONLY



8" x 8" TAPPING SLEEVE WITH 8" FL x MJ VALVE,
BRANCH IS DIP WITH POLYETHYLENE ENCASEMENT.

ASSUME Lr=0' AND RESTRAIN BRANCH ACCORDING
TO MDWID STANDARD DETAIL MW-600, PAGE 2.

RESTRAINED LENGTH (L) REQUIRED ON BRANCH
IS 124 FEET.

TAPPING SLEEVE WITH VALVE



RESTRAINED JOINT EXAMPLES

ISSUED: 01/99
REVISED: 06/2004

SCALE: N.T.S.

PAGE 2
OF 3

S.D.# **MW-600A**

MULTIPLE HORIZONTAL WHERE RESTRAINT REQUIRED ON HORIZONTAL RUN (HR) OVERLAPS OR IS SHORTER THAN REQUIRED RESTRAINED LENGTH

EXAMPLE: 8" DIP WITH POLYETHYLENE ENCASEMENT, 45° HORIZONTAL BENDS, HR=20'

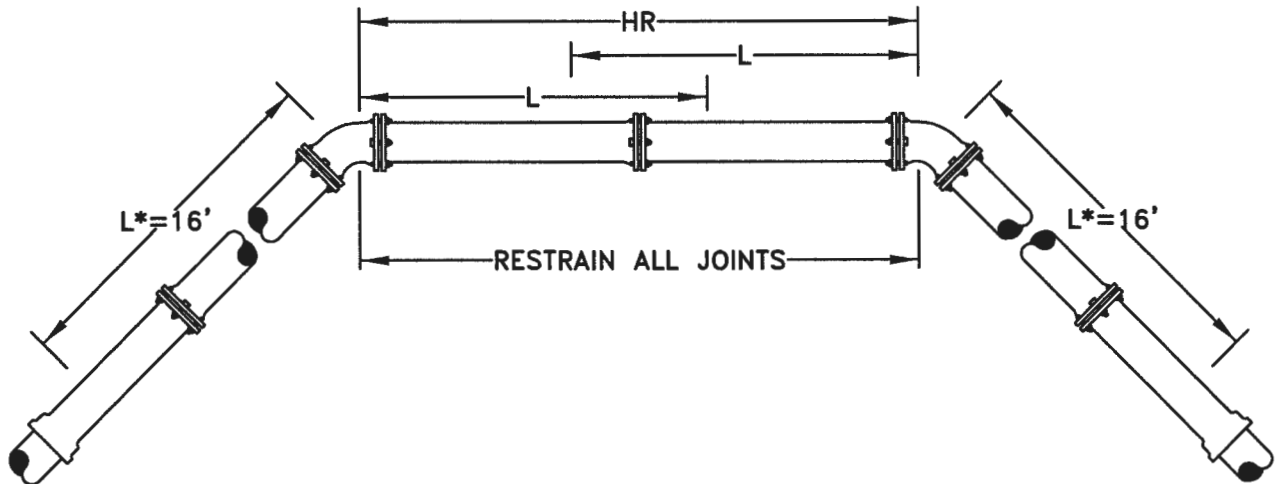
1. DETERMINE RESTRAINED LENGTH L USING MDWID STANDARD DETAIL MW-600, PAGE 3.

$$L=13'$$

2L=26' IS GREATER THAN HR=20'

2. DETERMINE REVISED RESTRAINED LENGTH (L*) REQUIRED AS FOLLOWS:

$$L^* = 2L - \frac{HR}{2} = 2(13') - \frac{20'}{2} = 16'$$



RESTRAINED JOINT EXAMPLES

ISSUED: 01/99

SCALE: N.T.S.

REVISED: 06/2004

PAGE 3
OF
3

S.D.# MW-600A